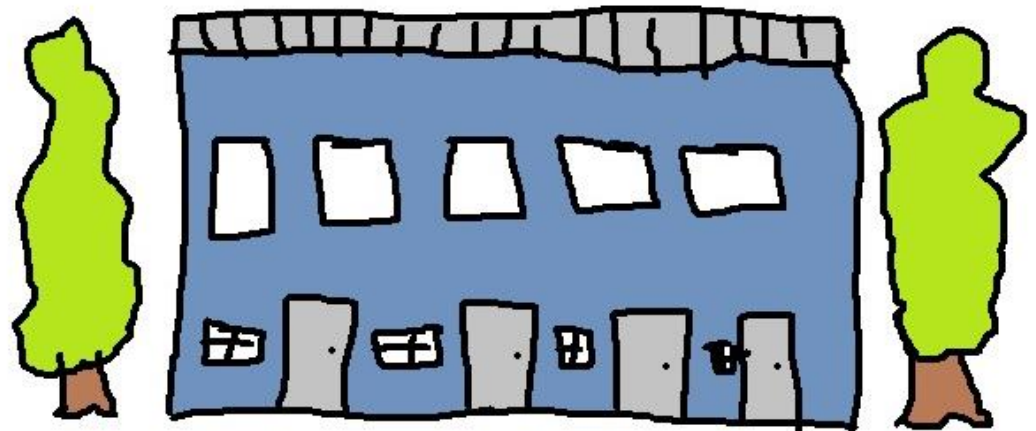
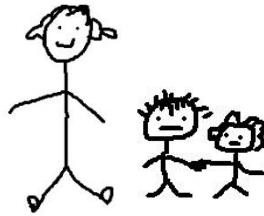
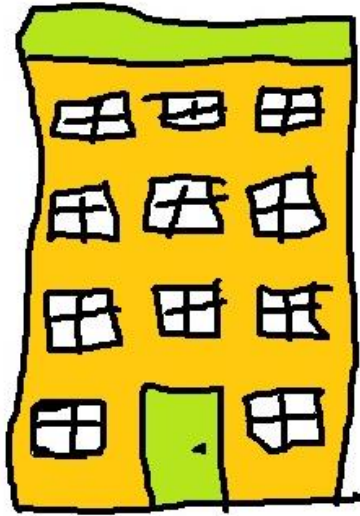
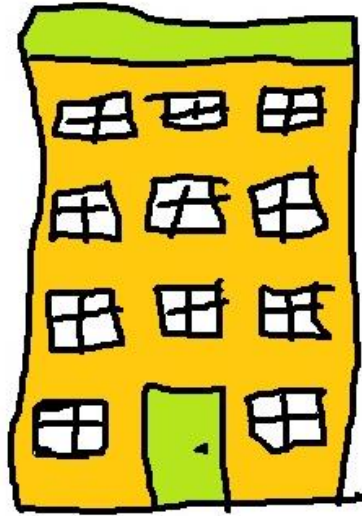
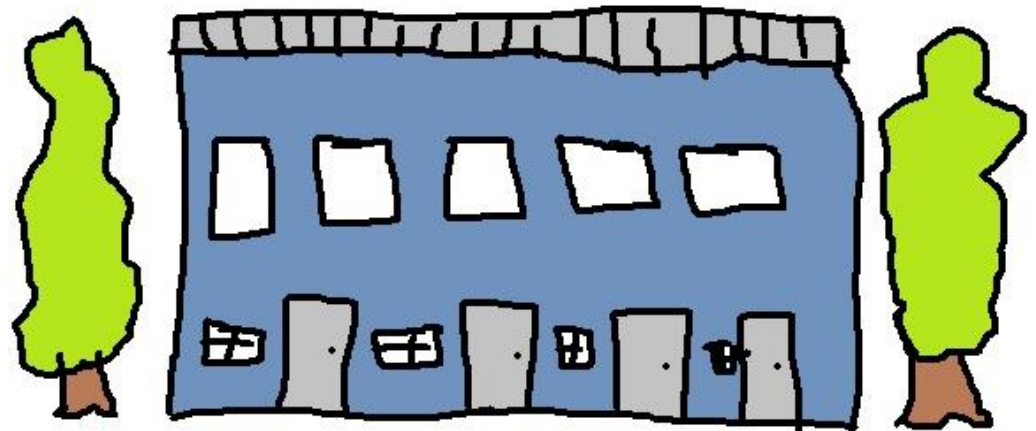
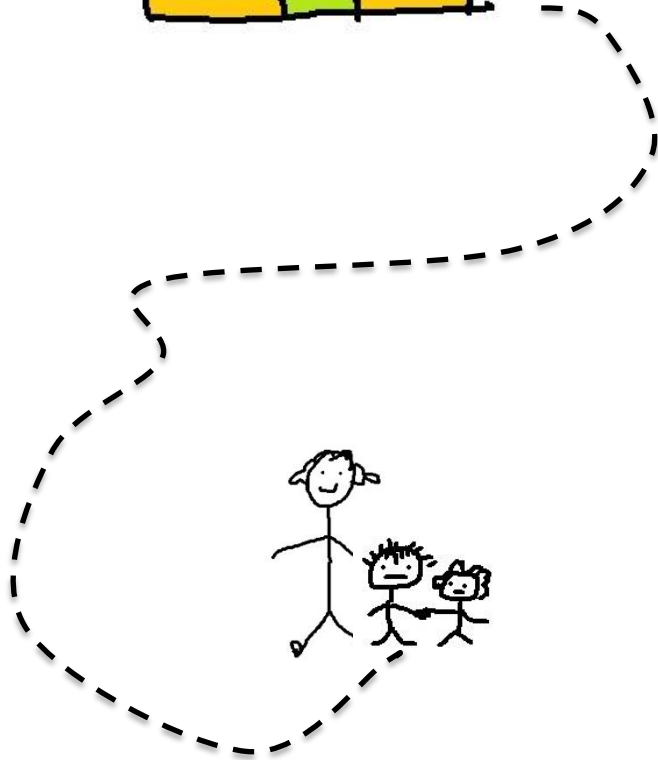


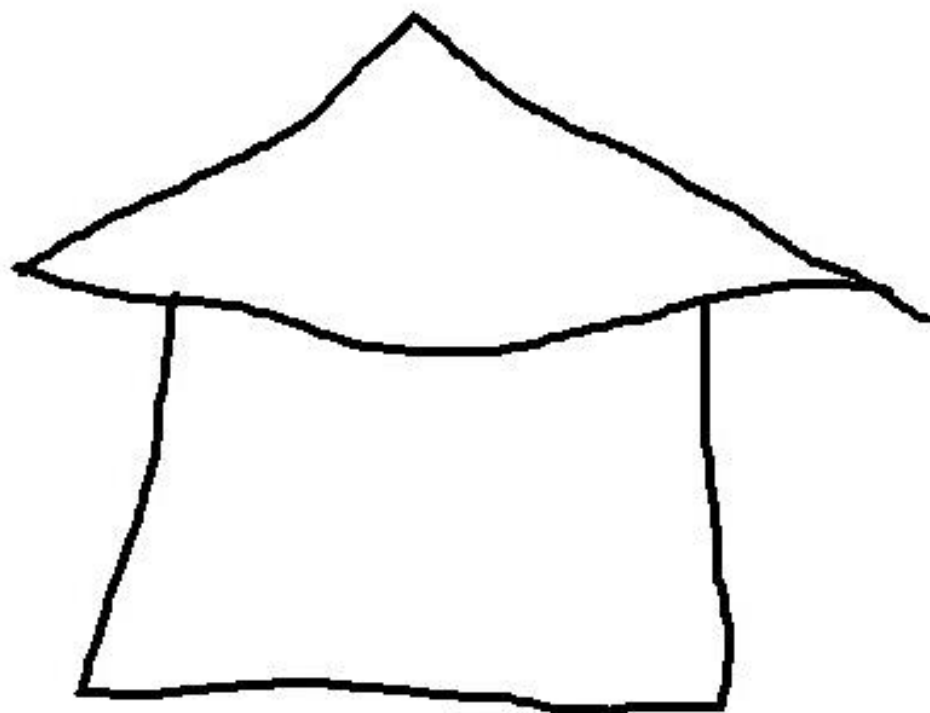
Moving ?

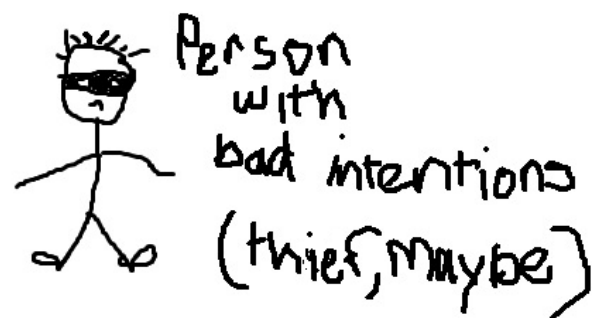
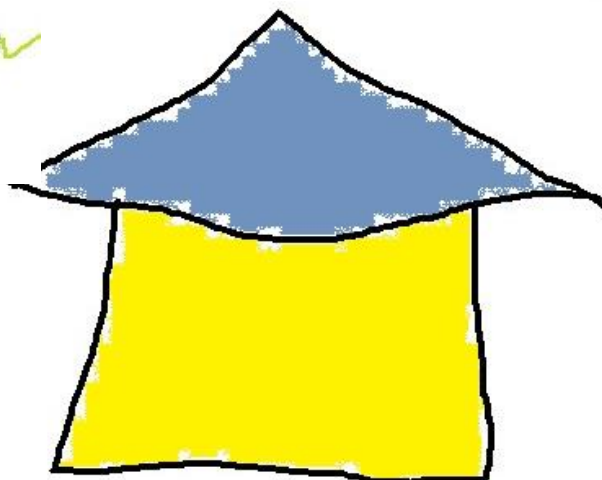


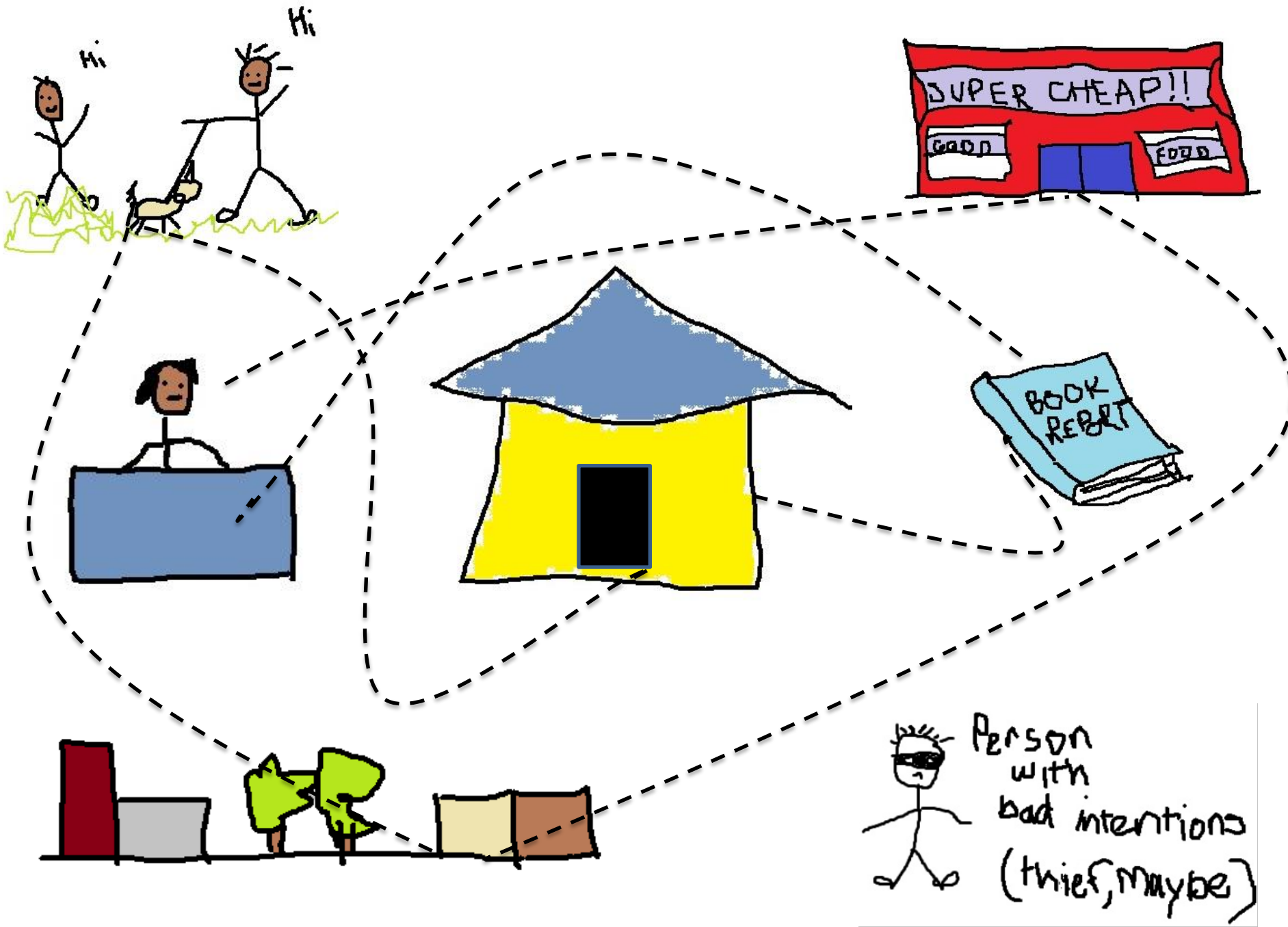


Moving Beyond the Basics: Housing + Transportation

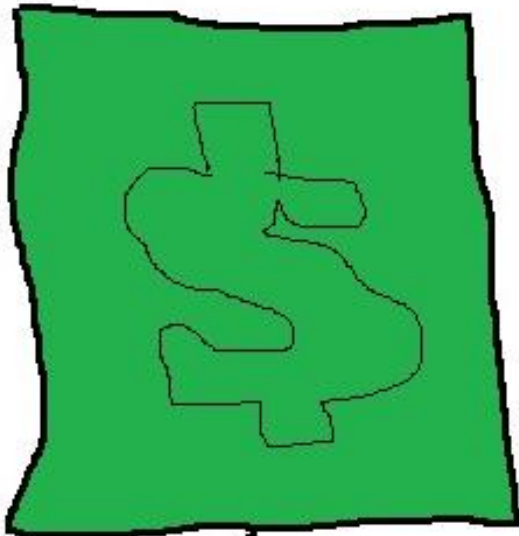




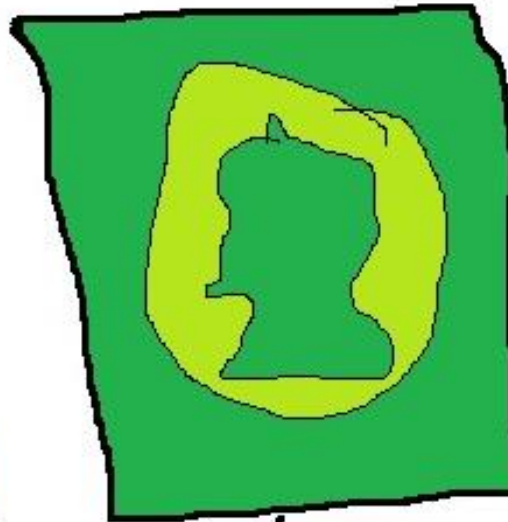




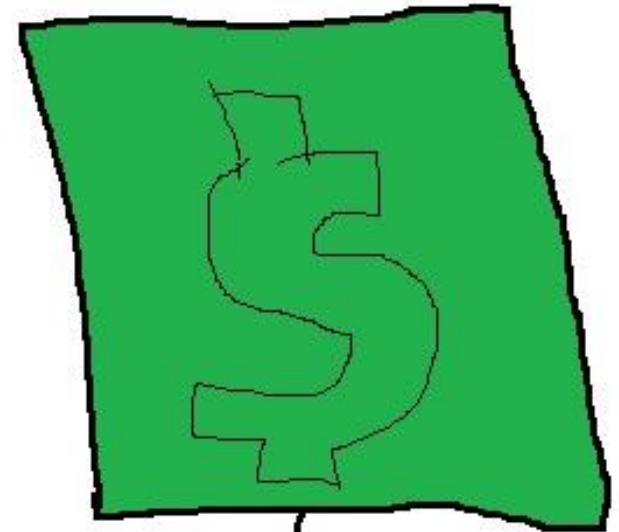
Your Money



Housing
30%

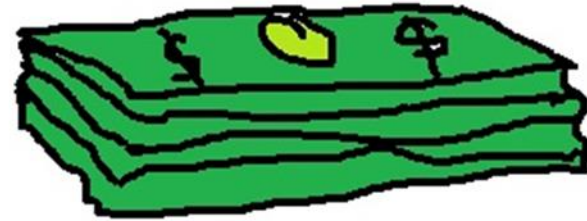


Transportation
30%

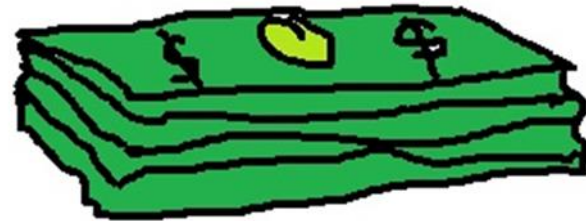


Food, clothing,
and everything
else in your life
40%

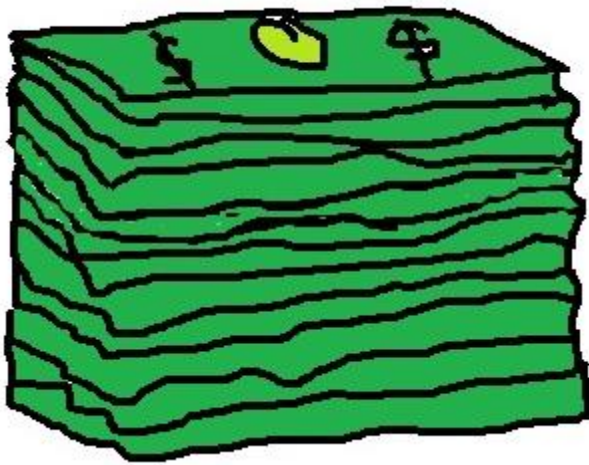
Bye, bye money...



Insurance



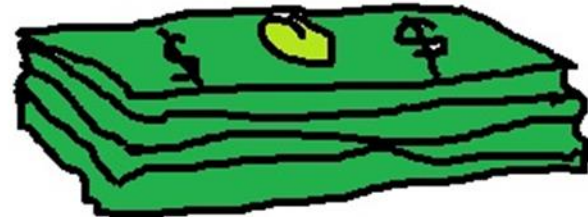
Repairs



Rent



Bus
pass

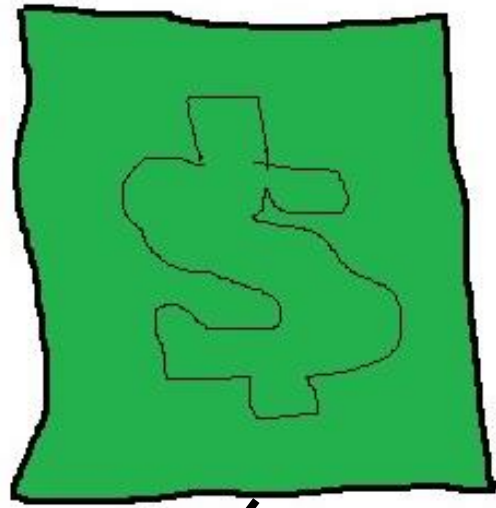


Gas

Transportation

Your Money

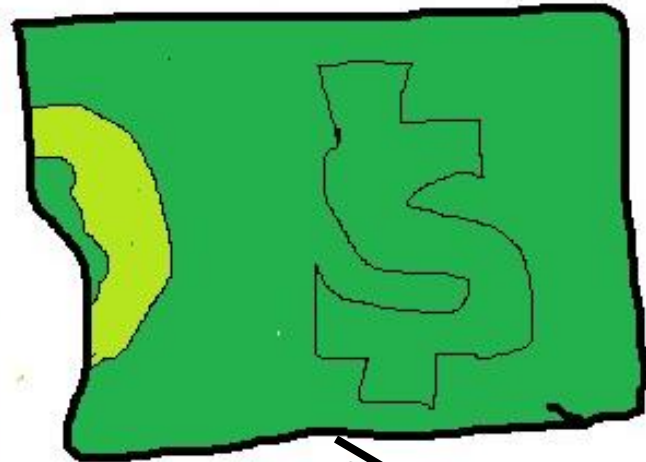
Yay!



Housing
30%

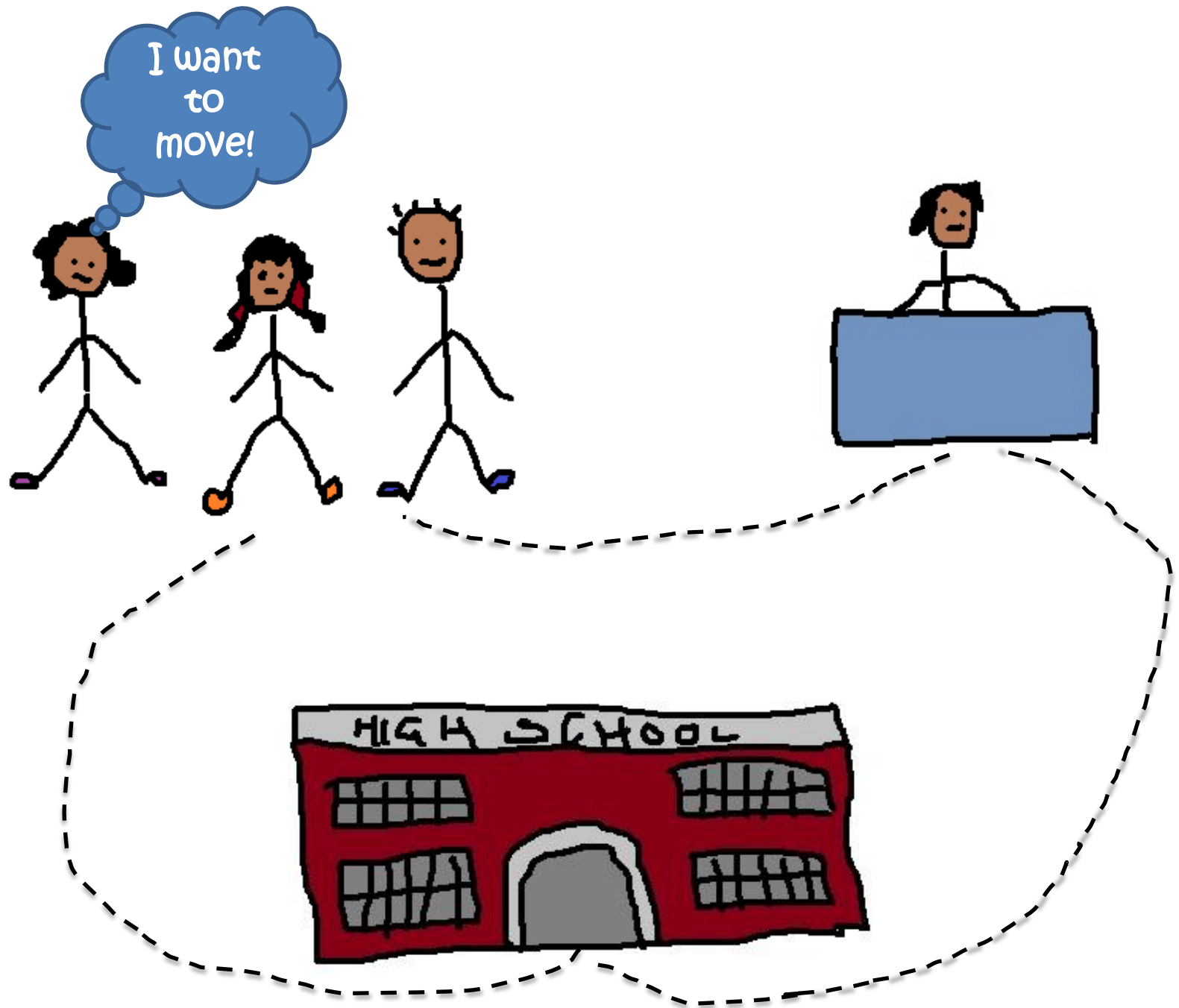


Transportation
Less than 30%

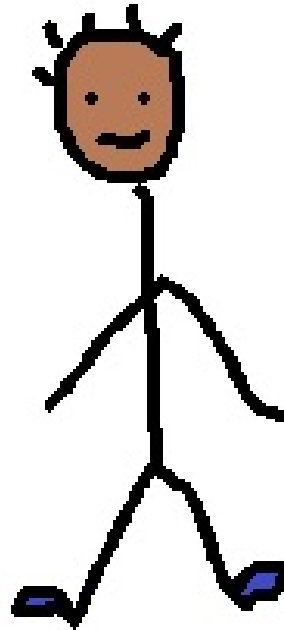


Food, clothing,
and everything
else in your life

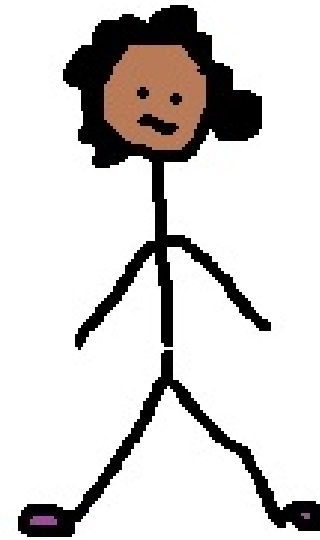
More than 40%







No more rush
hour traffic

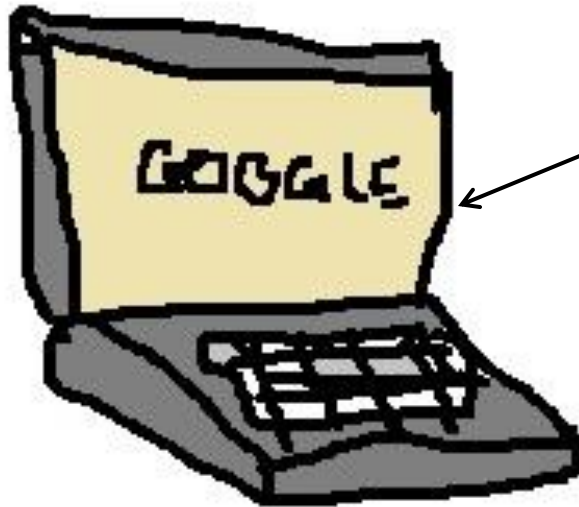


Rachel's Monthly Savings

- \$80 in Car expenses
- 5 hours in travel time



This is supposed to be a
laptop computer



And this is a mouse

Find rentals: Type an address, neighborhood or city

Clear Filters

Price & Beds

My Commutes

Gotta Go

Share ▾

Results

Favorites

Type an address and click the Go button to find rentals by commute time.



Mall 205

Time:

30 min

By:



Go

[Add another commute](#)

Your destination

Your travel time

Your transportation mode

Your travel zone



\$685-\$995
Waverly Gardens
1-3 beds



East Park Place
2 beds
29 mins
Walk Score: 68



\$1,330-\$2,434
2121 Belmont
1-2 beds
Buckman
26 mins



\$675-\$856
Reflections at Happy Valley
Studio
27 mins
Walk Score: 65



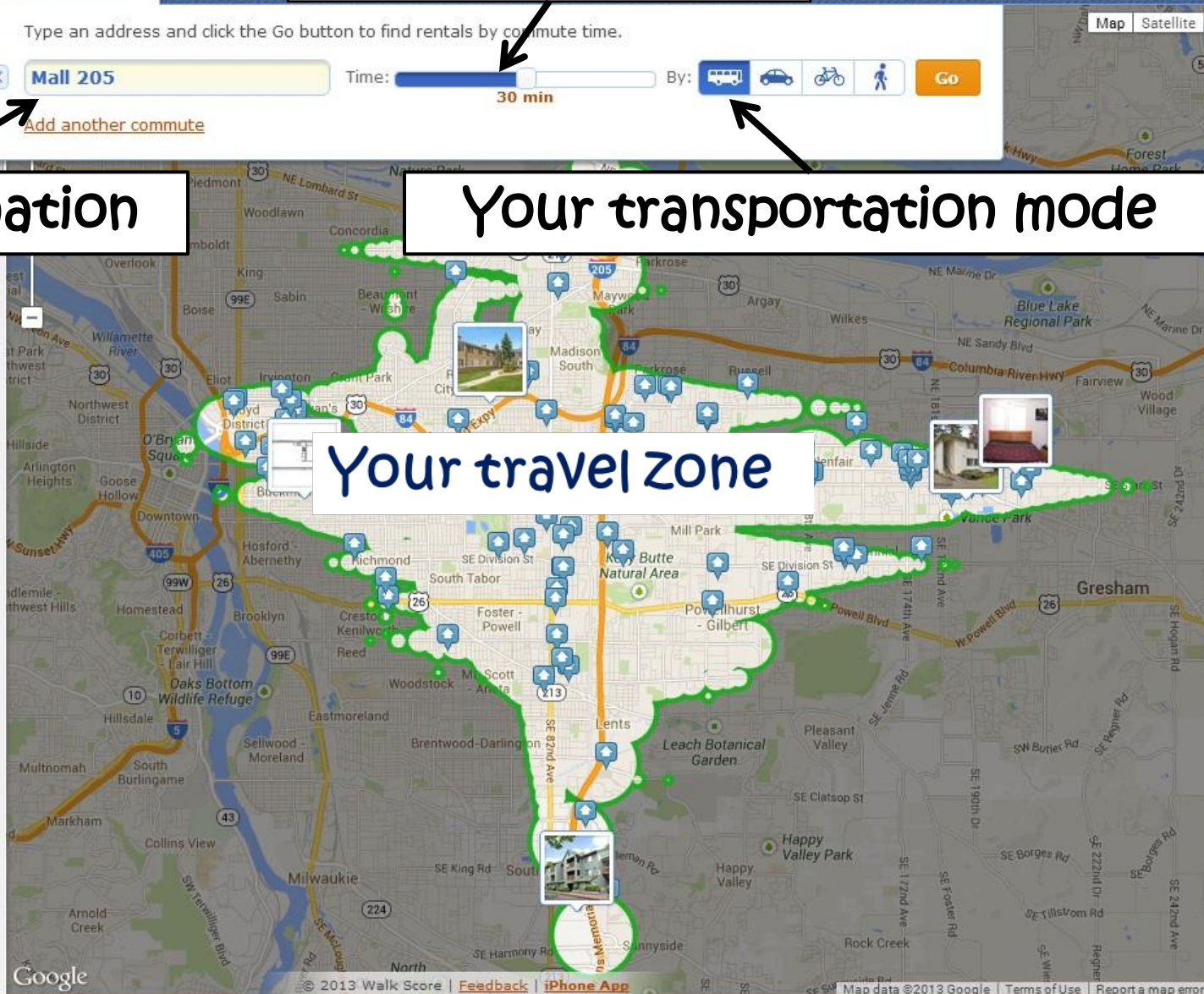
\$701-\$1,005
The Ellington
Studio
Madison South
22 mins



\$750-\$1,150
Fairmont Villa Apartments
1-3 beds
Parkrose Heights
20 mins



\$1,480-\$1,575
Access 15
1-2 beds
Lloyd
26 mins



Two destinations

neighborhoods Find Rentals Why It Matters Professional Log in

neighborhood or city Go

My Commutes Gotta Have... Public Transit Neighborhoods

Type an address and click the Go button to find rentals by commute time.

1 lincoln park elementary Time: 25 min By: Go

2 Mall 205 Time: 25 min By: Go

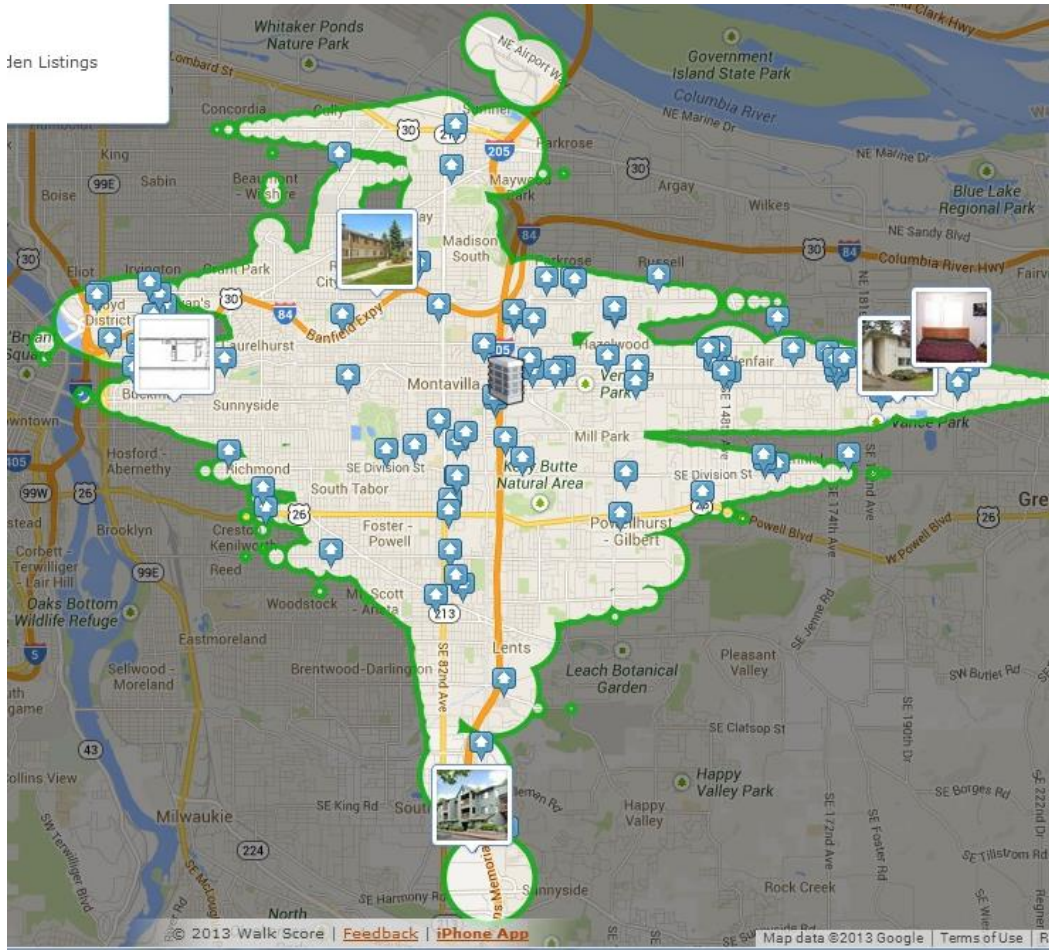
[Add another commute](#)

Best places to look

Map Satellite

© 2013 Walk Score | Feedback | iPhone App Map data ©2013 Google Terms of Use Report a map error

den Listings



WALK SCORE Cities & Neighborhoods Find Rentals Why It Ma

Find rentals: Type an address, neighborhood or city Go

Clear Filters Price & Beds My Commutes Gotta Have...

Results

Sort: Featured

\$685-\$999
Waverly
1-3 beds
28 mins
Walk Score: 68

\$750
East Park Place
2 beds
29 mins
Walk Score: 68

\$1,330-\$2,434
2121 Belmont
1-2 beds
Buckman
26 mins

\$675-\$856
Reflections at Happy Valley
Studio
27 mins
Walk Score: 65

\$701-\$1,005
The Ellington
Studio
Madison South
22 mins

\$750-\$1,150
Fairmont Villa Apartments
1-3 beds
Parkrose Heights
20 mins

\$1,480-\$1,575
Axxess 15
1-2 beds
Lloyd
26 mins

Price: \$0 - 5000+
Bedrooms: Studio - 5+

More options
☐ Dogs
☒ Require Photos
☐ Only Show Houses
☐ Cats
☐ Show Hidden Listings

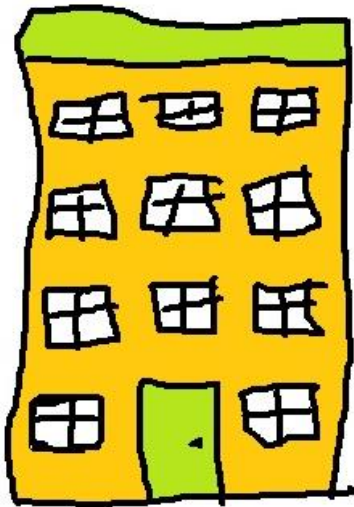
Enter your rent range and the number of bedrooms you want on this tab.

<http://www.walkscore.com/apartments/>

Free

<http://www.padmapper.com/>

<https://maps.google.com/>



Transportation + Housing Cost Comparison Worksheet

Here's an example--

Home 1 Address: 98765 Marshmallow Drive			
1. Name 3 places you go often.	work	Sister's house	grocery
2. How will you get there? (Bus, walk, drive, etc.)	car	car	car
3. Number of times per week you go to each	5	4	5
4. Miles from your home www.maps.google.com .	4.2	12.3	1.5
5. Round trip miles per month = $8 \times (\#3 \times \#4)$	168	393.6	36
6. Cost per month • Car = 40 cents/mile (.4) • Bus = Transit fares • Walk = No cost	\$67.20	\$157.44	\$14.40
YOUR TRANSPORTATION COST EACH MONTH : Add the three columns			\$293.04

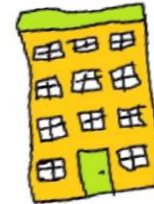
7. How long to get there? www.maps.google.com .	20 minutes	30 minutes	10 minutes
8. Round trip time per month = $8 \times (\#3 \times \#7)$	800 minutes	960 minutes	240 minutes
HOW LONG YOU SPEND TRAVELING PER MONTH to places you go often : Add the three columns, divide by 60			33.3 hours

Compare your combined monthly housing and transportation costs--

	Your Housing Cost from Section 8 estimate	Your Transportation Cost from above	Your Housing + Transportation Cost
Home 1	\$400	\$293	\$693
Home 2	\$400	\$100	\$500

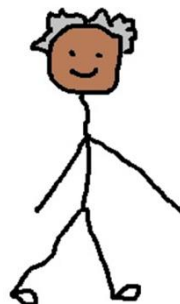
Home 2 Address: 1234 Main Street			
1. Name 3 places you go often.	work	Sister's house	grocery
2. How will you get there? (Bus, walk, drive, etc.)	Bus	Walk	Walk
3. Number of times per week you go to each	5		
4. Miles from your home www.maps.google.com .	6.8		
5. Round trip miles per month = $8 \times (\#3 \times \#4)$	272		
6. Cost per month • Car = 40 cents/mile (.4) • Bus = Transit fares • Walk = No cost	\$100 monthly bus pass		
YOUR TRANSPORTATION COST EACH MONTH : Add the three columns			

7. How long to get there? www.maps.google.com .	48 minutes		
8. Round trip time per month = $8 \times (\#3 \times \#7)$	1920 minutes		
HOW LONG YOU SPEND TRAVELING PER MONTH to places you go often : Add the three columns, divide by 60			

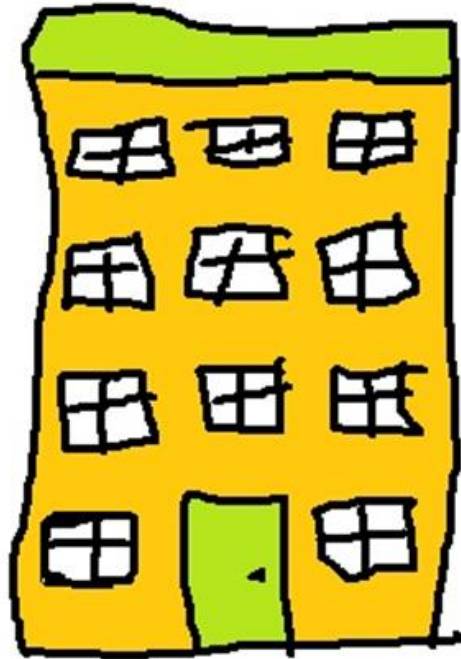


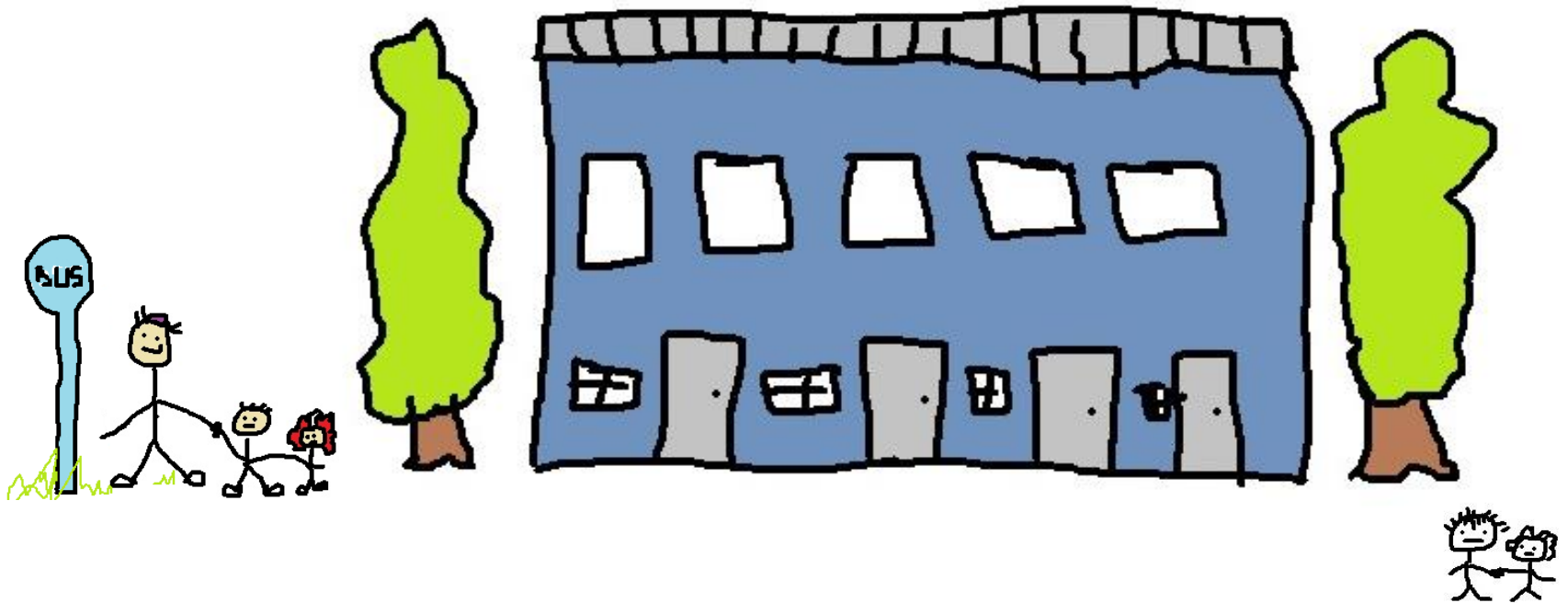
CHECK IT OUT!

A Checklist to
Make Sure the Home Is Right
for You



While you may have challenges...
you also have choices.





Consider your
transportation options and costs
before you make a move.

Brought to You By...



VANCOUVER
HOUSING AUTHORITY



Portland State
UNIVERSITY



With Support From...



Metro | *Making a great place*



U.S. Department of Transportation
Federal Transit Administration



OTREC
OREGON TRANSPORTATION RESEARCH
AND EDUCATION CONSORTIUM